

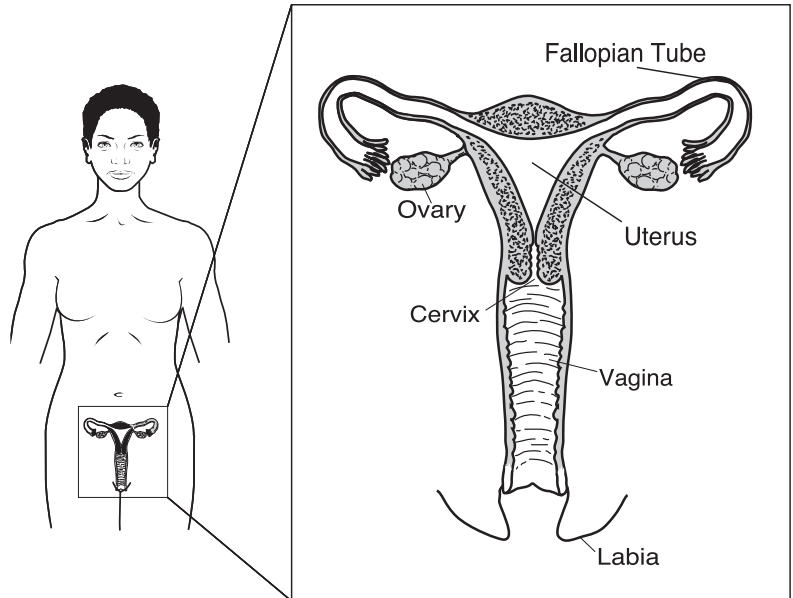
Pwosedi Anpitasyon Elektwochirijikal ak Lans (Loop Electrosurgical Excision Procedure, LEEP)

Efòmasyon sou LEEP

Pwosedi Anpitasyon Elektwochirijikal ak Lans, oswa LEEP, se yon pwosedi kote yo retire tisi ki pa nòmal epi ki ka mennen nan kansè nan kòl matris.

Kòl matris la se ouvèti iteris (matris) la epi li sitiye nan tèt vajen an.

Anjeneral, yo fè LEEP a nan biwo doktè a oswa nan klinik la. Pwosedi a pran apeprè 30 minit, men planifikasyon pou randevou a pran 2 èdtan.



Ki jan pou w prepare w

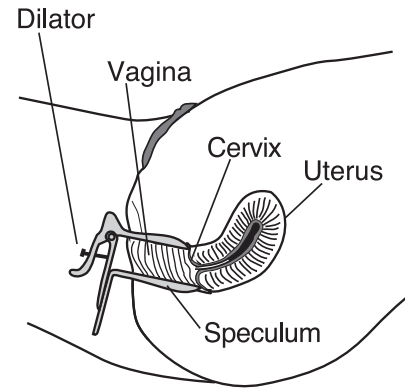
- Koumanse 2 jou anvan pwosedi a, evite fè sèks epi pa sèvi ak krèm nan oswa alantou vajen an.
- Pa fè twalèt deba w.
- Pran yon medikaman kont doulè yo vann san preskripsyon 2 èdtan anvan pwosedi a. Men kèk ou ka chwazi: Ibipwofèn (Advil, Motrin) ak asetaminofèn (Tylenol).

Kouman li fèt

- Yo pral ba ou ibipwofèn pou ede w nan nenpòt malèz pwosedi a lakoz.
- Ale nan twalèt la epi vide blad pipi ou anvan tès la.
- Retire tout metal, tankou nenpòt zanno, si sa posib. Asire w, ou fè enfimyè a oswa doktè a konnen si ou gen nenpòt metal andedan kò ou ki pa ka soti.
- Yo pral mande w pou w dezabiye koumanse nan ren ou pou desann pi ba epi yo pral kouvri w ak yon fèy papye.
- Y ap gen pou mete yon tanpon adezif sou kwis ou yo rele plak pou mete atè. Li frèt.
- Yo pral mande w pou w kouche sou tab egzamen an epi mete pye ou nan sipò ki nan pwent tab la, yo rele l etriye.
- Kite jenou ou tonbe nan chak bò yo. Respire dousman epi rale anpil souf pou w ka detann misk yo ki ozalantou vajen ou pandan egzamen an.



- Y ap gen pou foure yon zouti ki gen fòm bèk kannna yo rele espekouloum nan bouch vajen w pou pèmèt doktè w la wè andedan vajen ou.
- Y ap mete yon likid yode nan matris ou pou yo ka wè selil ki pa nòmal yo pi byen. Likid sa a ap netwaye kòl matris la tou pou prepare l pou pwosedri a.
- Doktè w la pral gade nan kòl matris ou ak yon gwo loup ki rele kolposkòp. Kolposkòp la sanble ak yon pè nan lonvi ki kanpe sou yon sipò. Kolposkòp la pa prale andedan ou.
- Kòl matris ou angoudi ak yon anestezi lokal. Se menm medikaman sa a dantis itilize pou angoudi bouchou pandan swen dantè yo. Li ka lakòz kè w bat vit epi li ka fè ou santi w ap tranble. Sa ap pase nan kèk minit.
- Y ap foure yon bouk ki fèt ak fil metalik nan vajen an. Se bouk sa a k ap wete tisi ki pa nòmal ki nan kòl matris la. Yo pral voye tisi sa a nan laboratwa a pou fè etid apwofondi.
- Ou ka santi ti doulè pandan pwosedri a.
- Li enpòtan pou ou pa mouvman kò w pandan pwosedri a ap fèt.



Risk posib

Doktè w la pral revize risk sa yo avèk ou anvan pwosedri a.

- Gen risk enfeksyon oswa gwo senyman, men sa yo pa rive fasil.
- Gen posibilite pou tisi ki pa nòmal la pa soti pandan pwosedri sa a epi pou w bezwen lòt operasyon.
- Gen risk ki trè ra pou w gen tranche anvan lè nan gwosès ki rive apre pwosedri sa a.

Pran swen tèt ou apre

Li pral pran plizyè semèn pou w geri apre pwosedri sa a. Planifye pou w pran repo pou semèn kap vini apre a. Ou ka gen kèk senyman, ki sanble ak lè w gen règ ou ki koule anpil, pandan kèk jou, ansanm ak ti ekoulman ki gen san pandan kèk semèn.

- Pa mete anyen nan vajen an pandan 6 semèn apre pwosedri a. Sa a gen ladan, pa antre nan okenn relasyon seksyèl, pa mete okenn tanpon, epi pa janm fè twalèt deba w. Sa a pral diminye risk pou senyman nan zòn nan k ap geri a.
- Manje yon rejim nòmal.
- Pran ibipwofèn (Advil, Motrin) oubyen aksetaminofèn (Tylenol) oubyen medikaman ki sanble ak sa ki endike nan boutèy la.
- Okòmansman, ekoulman yo ka sanble ak grenn kafe ki gen koulè mawon fonsè, epi w pral gen kèk ti senyman, ki sanble ak lè w gen règ ou. Oframezi, ekoulman an pral vin jòn epi likid. Ou mèt mete yon kotèks.
- Ou mèt fè twalèt ou. Pa benyen nan benwa ki plen dlo, pa antre kò w nan okenn fòm pisin, oubyen naje pandan 6 semenn paske sa ka ogmante chans pou w fè enfeksyon.

Lè pou w rele founisè swen sante ou

Rele si ou genyen:

- Anpil senyman nan yon nivo ki ka plen yon sèvyèt nan inèdtan
- Gwo doulè nan vant oswa doulè k ap vin pi mal ofiramezi
- Frison oswa lafyè nan 100.4 degre Farenay (38°C) oswa pi wo
- Ekoulman nan vajen ki gen yon move odè

Suivi

Ou pral resevwa rezilta yo ak enstriksyon pou randevou swivi alavni. Yo pral pwograme yon vizit swivi pou ou. Li vrèman enpòtan pou w vini nan tout randevou ou yo.

Pale ak doktè w oswa ekip swen sante w la si ou gen nenpòt kesyon sou swen ou.

Pou plis enfòmasyon sou sante, ale nan wexnermedical.osu.edu/patiented oswa kontakte Bibliyotèk la pou Enfòmasyon sou Sante nan 614-293-3707 oswa nan health-info@osu.edu.

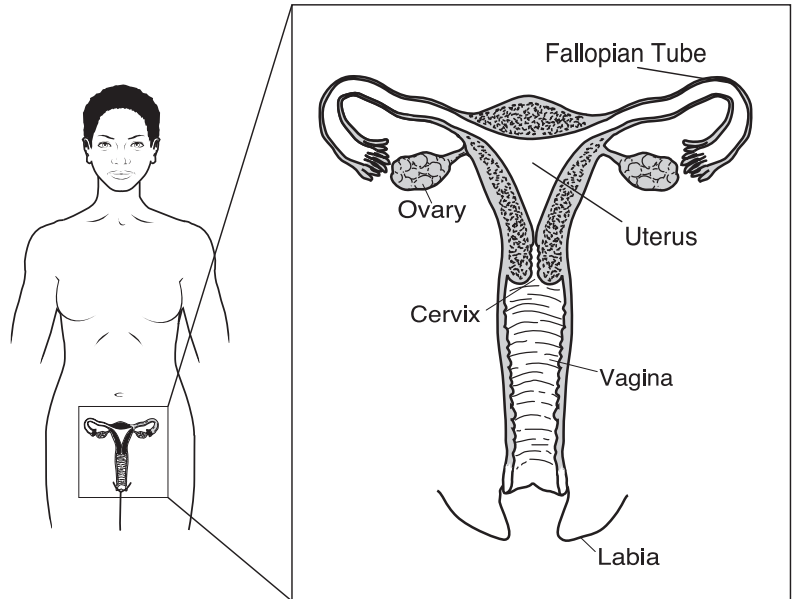
Loop Electrosurgical Excision Procedure (LEEP)

About LEEP

Loop Electrosurgical Excision Procedure, or LEEP, is a procedure to remove tissue from the cervix that is not normal and may lead to cancer.

The cervix is the opening of the uterus (womb) and is located at the top of the vagina.

LEEP is usually done in the doctor's office or clinic. The procedure takes about 30 minutes, but plan for the appointment to take 2 hours.



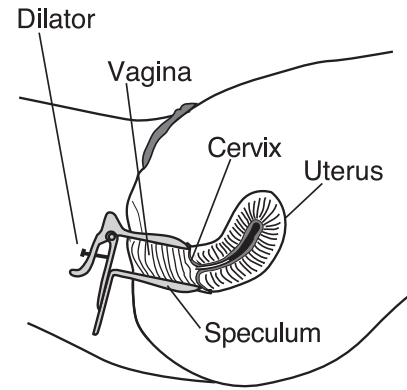
How to prepare

- Starting 2 days before the procedure, avoid sex and do not use creams in or around the vagina.
- Do not douche.
- Take an over-the-counter pain medicine 2 hours before the procedure. Ibuprofen (Advil, Motrin) and acetaminophen (Tylenol) are options.

How it is done

- You will be given ibuprofen to help with any discomfort from the procedure.
- Go to the bathroom and empty your bladder before the test.
- Remove all metal, including any piercings, if possible. Be sure to let the nurse or doctor know if you have any metal inside your body that cannot be removed.
- You will be asked to undress from your waist down and will have a paper sheet to cover you.
- A sticky pad, called a grounding pad, will be placed on your thigh. It is cold.
- You will be asked to lie down on the exam table and place your feet in holders at the end of the table, called stirrups.
- Let your knees fall to the sides. Take slow, deep breaths to relax the muscles around your vagina during the exam.

- A tool shaped like a duck bill, called a speculum, will be placed into the opening of your vagina to allow your provider to see inside your vagina.
- An iodine solution is applied to the cervix to make abnormal cells easier to see. This solution also cleans the cervix to prepare for the procedure.
- Your provider will look at your cervix with a big magnifying glass, called a colposcope. The colposcope looks like a pair of binoculars on a stand. The colposcope does not go inside of you.
- Your cervix is numbed with a local anesthetic. This is the same medicine the dentist uses to numb you for dental work. It can cause your heart to beat fast and may make you feel shaky. This will pass in a few minutes.
- A wire loop is inserted through the vagina. The abnormal tissue from the cervix is removed with this loop. This tissue will be sent to the lab for closer study.
- You may feel mild cramping during the procedure.
- It is important that you do not move while the procedure is being done.



Possible risks

Your provider will review these risks with you before the procedure.

- Rare risk of infection or heavy bleeding.
- Chance not all abnormal tissue will be removed with this procedure and you will need more surgery.
- Very rare risk of preterm labor with pregnancies that happen after this procedure.

Caring for yourself after

It will take several weeks to heal from this procedure. Plan to rest for the next week. You may have some bleeding, no more than a heavy period, for a few days and light bloody discharge for a few weeks.

- Place nothing in the vagina for 6 weeks after the procedure. This includes no sexual intercourse, no tampons, and no douching. This will reduce your risk of bleeding from the area that is healing.
- Eat a normal diet.
- Take ibuprofen (Advil, Motrin) or acetaminophen (Tylenol) or similar medicine as directed on the bottle.
- The discharge may first look like brownish-black coffee grounds, and you will have some bleeding, which should be similar to a period. In time this will change to a yellow watery discharge. You may wear a pad.
- You may take a shower. Do not take a tub bath, use a hot tub or go swimming for 6 weeks as this increases your chance for infection.

When to call your healthcare provider

Call if you have:

- A lot of bleeding where you soak a pad in an hour
- Severe abdominal cramps or pain that gets worse over time
- Chills or fever of 100.4 degrees Fahrenheit (38°C) or higher
- Vaginal discharge that has a bad odor

Follow up

You will receive the results and instructions for future follow-up appointments. A follow-up visit will be scheduled for you. It is very important that you keep all of your appointments.

Talk to your doctor or health care team if you have any questions about your care.

For more health information, go to wexnermedical.osu.edu/patiented or contact the Library for Health Information at 614-293-3707 or health-info@osu.edu.