

**medela**   
mother's milk,  
everyday amazing™

# Symphony® & Harmony® Breast Pump Kit

EN Instructions for use



\*All parts that touch breast milk are made without BPA.  
\*Todas las partes que tocan la leche materna están fabricadas en BPA.

# Table of Content

1. Important Safeguards.....	4-5
2. Accessories .....	6-7
3. Cleaning Overview .....	8-9
4. Wash – Before first use and after each use.....	10-11
5. Sanitize – Before first use and once per day .....	14-15
6. Tubing Care.....	16-17
7. Assembly of Symphony Pump Kit.....	20-21
8. Assembly of Harmony Breast Pump .....	24-25
9. Pumping with Harmony Breast Pump .....	26-27
10. Breast Shield Sizing.....	28
11. Storing, Preparing & Feeding Breast Milk.....	29
12. Troubleshooting.....	30
13. Supplemental Information.....	31-33
14. Warranty .....	34

## Important

- Plastic bottles and component parts become brittle when frozen and may break when dropped.
- Bottles and component parts may become damaged if mishandled, e.g. dropped, over-tightened, or knocked over.
- Take appropriate care in handling bottles and components.
- Do not use the breastmilk if bottles or components become damaged.

## Symphony® Intended Use

The Symphony Breastpump is a powered breastpump to be used by lactating women to express and collect milk from their breast.

## Symphony Product Description

Symphony is a multi-user, hospital grade electric breastpump that includes 2-Phase Expression® technology and is capable of single and double pumping.

## Harmony® Intended Use

For lactating women to express and collect milk from their breasts to complement breastfeeding. If you have medical reasons or other needs for exclusively pumping, it is recommended that you use a hospital grade (multi-user) breastpump such as our Symphony breastpump. To learn more, visit us at [www.medelabreastfeedingus.com](http://www.medelabreastfeedingus.com).

## Harmony Product Description

Harmony is a personal use manual breastpump that includes 2-Phase Expression technology and is capable of single pumping.

The warning symbol identifies all instructions that are important to safety. Failure to observe these instructions can lead to injury or damage to the breastpump. When used in conjunction with the following words, the warning symbols stand for:



**WARNING** Can lead to serious injury or death.



**CAUTION** Can lead to minor injury.



**NOTE** Can lead to material damage.



**TIP** Useful or important information that is not related to safety.

**PLEASE SAVE THESE INSTRUCTIONS.**

# 1. Important Safeguards



When using electrical devices, basic safety precautions should always be followed, including the following:

## **READ ALL INSTRUCTIONS BEFORE USING THIS PRODUCT.**



### **WARNING: To avoid fire, electrocution, or serious burns:**

- Always unplug electrical product immediately after use.
- Do not use while bathing or showering.
- Do not place or store product where it can fall or be pulled into a tub or sink.
- Do not submerge pump unit into water or other liquid.
- Do not reach for a product if it has fallen into water or other liquid. Immediately unplug from electrical outlet and contact manufacturer.
- Do not spray or pour liquid directly onto the pump unit.
- Do not leave product unattended when plugged into an electrical outlet.
- Close supervision is necessary when this product is used near children.
- Use the product only for its intended use as described in this manual.
- Do not use attachments not recommended by the manufacturer, as this may cause hazards.
- Never operate this product if it has a damaged cord or plug, if it is not working properly, if it has been dropped or damaged, or dropped into water.
- Keep power cord and all components away from heated surfaces.
- Never use while sleeping or when drowsy.
- Never drop or insert any object into any opening or tubing.
- Do not use outdoors.
- Keep appliance dry and do not place in direct sunlight.
- Do not operate where aerosol (spray) products are being used or where oxygen is being administered.
- Equipment not suitable for use in the presence of a flammable anesthetic mixture with air or with oxygen or nitrous oxide.
- Separation from the mains is only assured through the disconnection of the power cord from the wall socket outlet.
- Position the device to ensure easy disconnection of the power cord from the supply mains.
- Use Medela original accessories only.
- There are no user-serviceable parts inside the Symphony. **DO NOT ATTEMPT TO REPAIR YOURSELF.** No modifications to the device are permitted.
- Always inspect power cord wires prior to use for damage or exposed wire. If damage is found, immediately discontinue use of power cord and call Medela Customer Service at 1-800-435-8316.
- Only use the power cord that comes with the Symphony. Make sure the voltage of the power cord is compatible with the power source.

**WARNING: To avoid health risk and reduce the risk of injury:**

- Breastpump kits are a personal care item intended for use by a single user only and should not be shared between users.
- Inspect the breastpump kit components prior to each use.
  - Do not use the components if they are damaged.
  - Do not use the components if dirt, mold or other contamination is visible.
- Inspect all appropriate pump components before each use.
- Clean and sanitize all parts that come in contact with your breast and breastmilk prior to first use. Sterile kits are ready to use and do not require washing prior to first use.
- Do not modify any breastpump kit components.
- Wash all parts that come in contact with your breast and breastmilk after every use.
- Do NOT continue pumping for more than 2 consecutive pumping sessions if no results are achieved.
- Do not thaw frozen breastmilk in a microwave or in a pan of boiling water.
- If problems or pain occur, consult your lactation consultant or physician.

**CAUTION: Can lead to minor injury:**

- Pump only with the breastpump in an upright position.
- Do NOT shorten tubing between breast shield and pump.
- Make sure the voltage of the device is compatible with the power source.
- Plug the power cord into the breastpump first and then into the wall socket.
- Do NOT use abrasive cleaners/detergents when cleaning breastpump or breastpump parts.
- Never put breastpump motor in water or a sterilizer, as you can cause permanent damage to the breastpump.
- Do not attempt to remove the breastshield from your breast while pumping. Turn the breastpump off and break the seal between your breast and breastshield with your finger, then remove breastshield from your breast.
- If pumping is uncomfortable or causing pain, turn the unit off, break the seal between the breast and the breastshield with your finger and remove the breastshield from your breast.
- Do not store wet or damp parts as mold may develop.
- Inspect the tubing for condensation or milk after each use. Wash or replace the tubing immediately after use, if milk is observed in the tubing.
- If tubing becomes moldy, discontinue use and replace tubing.
- Do not use the breastpump kit with a non-compatible breastpump.
- Do not use the breastpump kit for any other purpose than expressing breastmilk.

## 2. Accessories

Symphony® Membrane Cap	8100769
Symphony Protective Membrane	8200094
Lactina to Symphony Conversion Kit	67091
PVC Tubing - Symphony, Lactina®, Classic™	101034773
PersonalFit™ Connectors	87071
PersonalFit 21 mm Breast Shield	87072
PersonalFit 24 mm Breast Shield	87073
PersonalFit 27 mm Breast Shield	87274
PersonalFit 30 mm Breast Shield	87075
PersonalFit 36 mm Breast Shield	87084
Replacement White Membranes	87088
Yellow Valve Heads & White Membranes	87089
Harmony™ Diaphragm, Stem, O-Ring Assembly	101034752
Harmony™ Manual Breast pump	67186



Authentic Medela Spare Parts are made with the quality materials and workmanship you expect and trust, only from Medela.

Non-Medela spare parts can vary significantly in terms of product design, materials, and workmanship; all of which may affect the performance of your Medela breast pump.



**Quality & performance**  
you can trust



## 3. Cleaning Overview

### **!** Note

It's important for you to do the following before using Symphony® or Harmony® for the first time\*:

1. For Symphony models that include a rechargeable battery, fully charge the battery 12 hours uninterrupted.
2. Separate all parts.
3. Clean - see instructions:
  - Wash – section 4
  - Sanitize – section 5

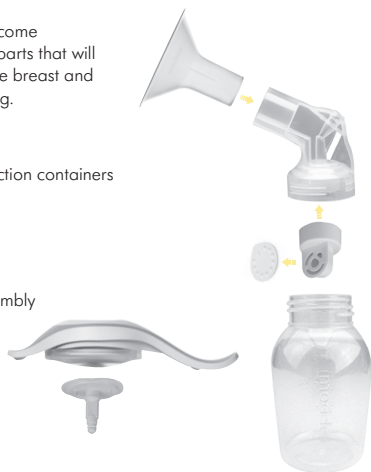
### **!** Note

\*Sterile kits are ready to use and do not require washing prior to first use. If the sterile packaging is damaged, the contents must be cleaned prior to first use.




Breast shield assemblies come assembled. Separate all parts that will come into contact with the breast and breastmilk before cleaning.

Parts to clean:

- Breastshields
- Breastmilk bottle/collection containers
- Lids
- Connectors
- White membranes
- Yellow valve heads
- Harmony Handle Assembly



Kit components may vary from pictures in this instruction manual.

	Breastpump kit & bottles/ containers 	Tubing 	Harmony Handle Assembly 
<b>Before 1st use*</b>	<ul style="list-style-type: none"> <li>✓ wash</li> <li>✓ sanitize</li> </ul>		
<b>After each use</b>	<ul style="list-style-type: none"> <li>✓ wash</li> </ul>		
<b>Once per day</b>	<ul style="list-style-type: none"> <li>✓ sanitize</li> </ul>		
<b>As needed</b>		<ul style="list-style-type: none"> <li>✓ wash <b>only if</b> milk is in tubing or tubing is soiled</li> </ul>	<ul style="list-style-type: none"> <li>✓ wash <b>every few</b> pumping sessions</li> </ul>

Detailed cleaning instructions on pages 8-15:

- Wash – pages 10-12
- Harmony Handle Assembly – pages 12
- Sanitize – pages 14-15
- Tubing care – pages 16-17

**!** **Note**

\*Sterile kits are ready to use and do not require washing or sanitizing prior to first use. If the sterile packaging is damaged, the contents must be cleaned prior to first use.

**⚠** **Warning**

Breastpump kits are a personal care item intended for use by a single user only and should not be shared between users.

## 4. Wash – Before first use and after each use\*

### Supplies needed:

- Mild dish soap
- Clean dish cloth or soft brush
- Wash basin
- Drinking-quality water

### Parts to wash:

- Breast shields
- Breastmilk bottles/containers
- Lids
- Connectors
- White membranes
- Yellow valve heads

### Note

\*Sterile kits are ready to use and do not require washing prior to first use. If the sterile packaging is damaged, the contents must be cleaned prior to first use.

### Warning

Breastpump kits are a personal care item intended for use by a single user only and should not be shared between users.



Separate parts for washing.

### Caution

Separate and wash all parts that come in contact with breastmilk immediately after use to avoid dry up of breastmilk residue and prevent growth of bacteria.

### Note

- Wash breastpump kit parts after each use.
- Take care not to damage parts of the pump kit during cleaning.
- It is not necessary to wash Harmony® handle assembly, tubing, membrane cap or protective membrane prior to first use.
- Only wash tubing if milk is present or tubing is soiled.

## Wash in dishwasher



- Wash all separated parts on top rack of dishwasher.
- Allow all breastpump parts to air dry in a clean area.
- Store dry parts in a clean, cool place when not in use.

### Note

If the individual components of the pump kit are cleaned in a dishwasher, parts may be discolored by food pigments. This will not impact part function.

## Wash in a Dedicated Wash Basin



Rinse all separated parts that came in contact with breast and breastmilk in cool water in order to remove breastmilk residue.



OR

- Once rinsed, parts that have touched the breast or breastmilk should be placed in a clean wash basin, dedicated to only cleaning these items. Do not place parts directly in the sink.
- Soak all separated parts in warm soapy water for 5 minutes.
- Wash each part with a clean dish-cloth or soft brush.
- Rinse all separated parts with clear water.



- Place parts on a clean surface and/or towel.
- Allow all parts to air dry.
- Store dry parts in a clean, cool place when not in use. Do NOT store wet or damp parts.

### **Caution**

Only use drinking-quality tap or bottled water for cleaning.



You may also wash your kit parts by following the instructions on the Quick Clean™ BreastMilk Removal Soap bottle. (sold separately)

### **Note**

Store the pump kit in a clean bag/container until next use.

## 4. Wash (cont.)

### Harmony® Handle Assembly Cleaning

Care for your Harmony handle assembly after every few manual pumping sessions or when soiled.

- Wash the Harmony handle assembly, which includes the Harmony handle, diaphragm stem, and o-ring with warm soapy water.
- Pay special attention to the o-ring during assembly and cleaning to avoid losing or damaging.
- Do not use Quick Clean™ Micro-Steam™ bag to sanitize the Harmony handle assembly.





## 5. Sanitize – Before first use and once per day\*

### Supplies needed:

- Clean pot for boiling water
- Drinking-quality water
- Tongs
- Clean dish cloth

### Parts to sanitize:

- Breastshields
- Breastmilk bottles/containers
- Lids
- Yellow valve heads
- Connectors
- White membranes

Medela pump kit parts can be sanitized by boiling or  
Note: \*Sterile kits are ready to use and do not require  
the contents must be cleaned prior to first use.



- Separate all parts that come in contact with breastmilk.



### Note

Sanitize breastpump kit parts once daily.



### Warning

Breastpump kits are a personal care item intended for use by a single user only and should not be shared between users.



Allow water to cool and gently remove parts from water with tongs.

using the Medela Quick Clean™ Micro-Steam™ bag. (sold separately)  
washing or sanitizing prior to first use. If the sterile packaging is damaged,



- Wash hands thoroughly.



- Fill a pot with enough water to cover all parts.
- Bring water to a boil.
- Place parts in boiling water for 10 minutes.

**!** **Note**

If you notice a white residue on your parts after boiling, you may have a high mineral content in your water. Remove residue by wiping parts with a clean washcloth and air dry. We recommend that you boil parts with distilled water to prevent substantial mineral build-up over time which may compromise your parts.



- Place parts on a clean surface and/or towel.
- Allow all parts to air dry.
- Store dry parts in a clean, cool place when not in use. Do NOT store wet or damp parts.

**!** **Note**

Store the pump kit in a clean bag/container until next use.



If sanitizing your pump kit parts with the Quick Clean Micro-Steam bag, separate all parts that come in contact with your breast or breastmilk and follow the instructions on the Quick Clean Micro-Steam bag. Not for use with the Harmony handle assembly.

## 6. Tubing Care

Supplies needed:

- Mild dish soap
- Clean dish cloth
- Clean wash basin
- Drinking quality water
- Damp (not wet cloth)

Parts needed:

- Tubing
- Symphony® pump
- Membrane cap
- Protective membrane

### 6A. Tubing care

- Inspect tubing after each pumping session.



#### Caution

- Do not store wet or damp parts as mold may develop.
- Inspect the tubing for condensation or milk after each use. Wash or replace the tubing immediately after use if soiled or milk is observed in the tubing.
- If tubing becomes moldy, discontinue use and replace tubing. Replacement parts can be purchased at [www.ShopMedela.com](http://www.ShopMedela.com).



#### Note

- Tubing should be washed if milk is present or tubing is soiled.
- Cleaning tubing is not necessary if condensation present is from previous washings or atmospheric conditions.



#### Warning

Breastpump kits are a personal care item intended for use by a single user only and should not be shared between users.

Do not immerse the pump in water. Do not run water over the pump.

3



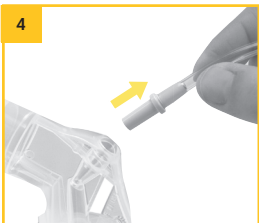
Remove, tubing, protective membrane, and membrane cap. Clean protective membrane and membrane cap by following steps in section 4.



1 Turn off breastpump.



2 Unplug breastpump from power source.



4 Remove tubing from breastshield.



- 5
- Rinse tubing in cool water to remove breastmilk.
  - Once rinsed, place in a clean wash basin, dedicated to only cleaning breastpump parts. Do not place parts directly in the sink.

## 6. Tubing Care (cont.)



- Soak tubing in warm soapy water for 5 minutes.
- Rinse tubing with clear water.
- Hang to air dry.
- Or shake out any drops of water from the tubing and let the pump run with tubing attached until dry.

### 6B. Cleaning and disinfecting the breastpump and pumping area



Wipe off breastpump and pumping area (ex: countertop or table) with a clean, damp (not wet) cloth. Water and mild dish soap or non-abrasive detergent may be used.

#### **Note**

Make sure to clean and disinfect all external parts of the breastpump, including the power button, let down button, vacuum control knob, and membrane area

7



Use a damp (not wet) cloth to wipe the pump and membrane area.

**!** **Note**

If there is condensation in the tubing: Shake water droplets out of the tubing and hang it up to dry or let the pump run with tubing attached for 1–2 minutes or until dry.



Wipe off the breastpump and pumping area with a clean, damp (not wet) cloth. Medela's Disinfectant Spray or an alcohol based disinfectant agent may be used to disinfect the breastpump and pumping area (ex: countertop or table); follow the disinfectant agent's instructions for use.

**⚠** **Caution**

Unplug breastpump before cleaning.  
Clean breastpump after every use and disinfect between users.

## 7. Assembly of Symphony® Pump Kit

### **T** Tip

Carry out all the steps with care and assemble the pump kit correctly for optimum performance.

#### Parts Needed:

- Tubing
- Symphony® pump
- Breastshields.
- Breastmilk bottles/containers
- Lids
- Connectors
- Yellow Valve Heads
- White Membranes
- Membrane cap
- Protective membrane

### **!** Note

- Use Authentic Medela Spare Parts only. See section 2 for details.
- Check pump kit components for wear or damage before use and replace if necessary.
- All components must be completely dry before use for proper performance and to prevent damage to the pump.

1



### Caution

Wash hands thoroughly with soap and water before touching breastpump, kit and breasts. Avoid touching the inside of containers or lids.

4

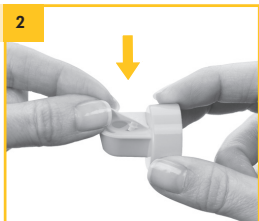


Push yellow valve head onto inner ring of connector bottom.

7



Place the protective membrane onto a flat surface and carefully push the membrane cap down until it engages.



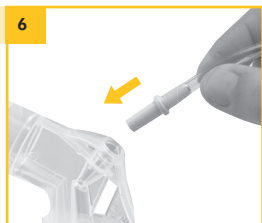
Carefully push the white membrane onto the yellow valve head until it engages and is laying flat.



Push the breastshield onto the connector.



Screw connector onto the bottle/container.



Insert the tubing into the corresponding opening in the connector.



Insert the tubing adapter into the opening in the membrane cap.

 **Warning**

Refer to breastpump instructions for use for important safeguards and operating information.

## 7. Assembly of Symphony® Pump Kit (cont.)



Open the lid of the breast pump.  
▶ Press the oval button on the top of the Symphony® and lift the handle.



Position the membrane cap firmly on the breast pump membrane to form a seal. Center the tubing connector in the recess in the pump housing.  
▶ Make sure that the membrane cap engages and lies flush to the surface.

### **Note**

If single pumping, only seat one membrane cap.



Center breastshields over your nipples and start pumping.  
(Caution: pushing shields too firmly onto breasts may affect milk flow.)

\*Kit components may vary from pictures in this instruction manual



To turn the pump on, press the power button. You will be starting in the Stimulation Phase. After 2 minutes, the pump will automatically change to the Expression Phase.\*



Center the tubing connector in the recess in the pump housing.

- ▶ Make sure that the membrane cap engages and lies flush to the surface.



Close the lid.

**! Note**

- For step 12:  
Always close the lid when pumping. The lid keeps the membrane cap pushed down to prevent a loss of vacuum that could occur if the membrane cap came off.



If let-down occurs before the Expression Phase begins, press the let-down button to begin the Expression Phase.\*



When your pumping session is over, store your breastmilk and clean your kit. Refer to sections 3-6 for cleaning instructions. Refer to section 10 for breastmilk storage guidelines.

\*Pumping instructions are for Symphony Standard 2-Phase Expression® or when using the MAINTAIN program of Symphony PLUS® program card. Please refer to the Symphony BreastPump Instructions for Use, item # 1907724, for more detailed pumping instructions.

## 8. Assembly of Harmony® Breast Pump

### Parts Needed:

- Handle, Diaphragm, Stem, O-Ring Assembly
- Conector/Pump Body
- White membrane
- Yellow valve
- Breastmilk bottle and lid
- Breastshield

### Note

- Inspect valves for cracks or chips and inspect membranes for holes, tears or warping. If you notice any damage to these parts, replace them immediately.
- Check stem to make sure O-Ring is present.

### Note

- Carry out all the steps with care and assemble the pump kit correctly for optimum performance.



Wash hands before touching breastpump, kit and breasts and avoid touching the inside of containers or lids.



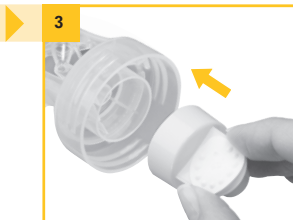
Screw bottle onto pump body.



Place silicone diaphragm/stem into pump handle and press down firmly around entire edge to ensure proper seal. The lines on the diaphragm should line up with the yellow dots on the handle.



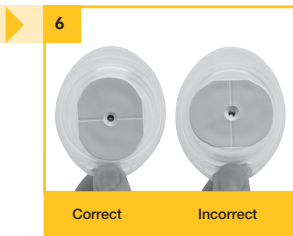
2 Snap membrane onto valve until membrane lies completely flat on valve.



3 Push yellow valve securely onto inner ring of pump body.



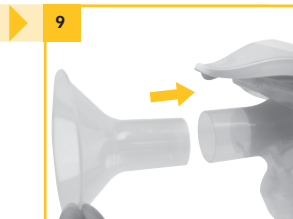
5 If the handle components have been disassembled, place the oval shaped base of the stem into the diaphragm.



6 Hint: Make sure the oval shape is lined up correctly in the diaphragm.



8 Insert stem of handle assembly into opening on top of pump body and push until you feel it snap in.



9 Insert PersonalFit™ breastshield into top opening on pump body.

## 9. Pumping with Harmony® Breast Pump



### Caution

- Wash hands thoroughly with soap and water before touching the breast and pump parts.
- Always inspect breastshields, valves and membranes prior to use for cleanliness. If dirty, see Sections 3-5.
- Contact your healthcare professional or breastfeeding specialist if you can express only minimal or no milk or if expression is painful. See Section 13 for more information.
- Do not try and express with vacuum that is too high and uncomfortable (painful). The pain, along with potential breast and nipple trauma may decrease milk output.
- Step 2: Do not hold the pump kit by the bottle. This can lead to blockage of the milk ducts and engorgement.


1



Center breastshield over nipple. Caution: pushing shield too firmly into breast may actually reduce milk flow.

3



Start pumping in the stimulation mode by pressing down on the milk drops symbol  on top of the pump handle. Press and release quickly until you see milk flow begin. This mode mimics baby's initial rapid sucking and is designed to stimulate milk flow/let-down.

2



The adjustable handle can be positioned for your maximum pumping comfort.

The level of vacuum is controlled by the compression and the speed of the handle stroke. You decide the pumping rhythm that is best for you.

4



Once let-down has begun, switch to the expression mode by pressing the bottom of the pump handle. This will give you a longer stroke that mimics baby's deeper, more relaxed sucking and is designed to maximize milk flow.

## 10. Breast Shield Sizing

### 1. Medela's PersonalFit™ sizing

Pumping should not hurt. For maximum comfort and pumping efficiency, Medela offers five breastshield sizes.

21  
mm

24  
mm

27  
mm

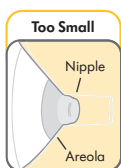
30  
mm

36  
mm

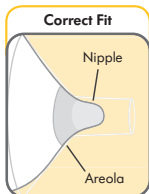
Visit [MedelaBreastshields.com](http://MedelaBreastshields.com) to view the full guide to help you determine your optimal size based on your nipple diameter.

### 2. Test your breast shield size

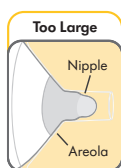
1. Start with the 24 mm that came with your pump, or the size determined by measuring.
2. Center nipple and gently hold breastshield against your breast.
3. Adjust for Maximum Comfort Vacuum™, to achieve optimum suction level.
4. Refer to images while pumping in expression.



- Nipple rubs along side of tunnel.
- Try a larger size.



- Nipple is centered and moves freely.



- Nipple and excessive areola are pulled into the tunnel.
- Try a smaller size.

### 3. Should you try a new size?

- Does your nipple rub sides of tunnel, to the point of causing discomfort?
- Do you see excessive areola being pulled into tunnel?
- Do you see any redness?
- Is your nipple or areola turning white?
- Do you feel unexpressed milk after pumping?

If you answered "YES" to any of these questions, consider trying a new size by following the measuring instructions above.

If you are still unsure if you selected the correct size, see a lactation consultant, breastfeeding specialist, or visit [MedelaBreastshields.com](http://MedelaBreastshields.com) for assistance in choosing the right size breastshield.



#### Caution

- While some discomfort may be felt when first using a breast pump, using a breast pump should not cause pain. If you are unsure about breastshield sizing, please contact a healthcare professional or breastfeeding specialist who can help you get a proper fit.

## 11. Storing, Preparing & Feeding Breast Milk

### Storing breastmilk in a Medela Cooler Bag (not included)

The Medela Cooler Bag requires one contoured ice pack (#87092) for cooling up to four 5 oz bottles of breastmilk.

- As soon as you are finished pumping, place the breast milk bottles or breastmilk storage bags in the cooler bag with the ice pack.
- Transfer breastmilk bottles or breastmilk storage bags to the refrigerator or freezer once you are home.

Storage Guidelines for Freshly Expressed BreastMilk (For Healthy Term Babies)			
Room Temperature 60°F to 77°F (16° C to 25° C)	Refrigerator 39°F (4°C) or colder	Freezer 0°F (-18°C) or colder	BreastMilk Thawed in the Refrigerator
Up to 4 hours is best *Up to 6 hours for milk expressed under very clean conditions	Up to 3 days is best *Up to 5 days for milk expressed under very clean conditions	Up to 6 months is best *Up to 9 months for milk expressed under very clean conditions	At room temperature: Up to 2 hours  Refrigerator: Up to 24 hours <b>DO NOT REFREEZE</b>

References: [www.BreastmilkGuidelines.com](http://www.BreastmilkGuidelines.com)

### \*Guidelines for expressing milk under very clean conditions:

- Before expressing milk, wash your hands with soap and water or use an alcohol-based hand sanitizer.
- Pump parts, bottles and pumping area must be clean.
- Breasts and nipples do not need to be washed before pumping.

These guidelines for storage and thawing of breastmilk are a recommendation. Contact your lactation consultant or breastfeeding specialist for further information.

- For additional breastmilk collection and storage information, please visit: [www.BreastmilkGuidelines.com](http://www.BreastmilkGuidelines.com)

#### **!** Note

- If the ice pack is frozen solid, it will safely cool your breastmilk for up to 8 hours in a room temperature environment.

## 12. Troubleshooting

<b>If the breastpump is not running</b>	Check whether electrical outlet power/battery is available. Check that the device is switched on. Check whether program card is inserted correctly in the card compartment on the back of the breastpump.
<b>If there is low or no suction</b>	Assemble the pump kit in accordance with the instructions in Sections 8-9. <ul style="list-style-type: none"><li>• Check whether all connections of the pump kit and breastpump are secure.</li><li>• Make sure that the breastshield forms a complete seal around the breast.</li><li>• The white membrane must lie flat against the yellow valve head.</li><li>• Check that the yellow valve head and white membrane are clean and not damaged.</li><li>• The ends of the tubing must be firmly connected to the connector and the opening in the membrane cap.</li><li>• The protective membrane and membrane cap should be correctly assembled and the membrane cap must be firmly fitted to the breastpump membrane to form a seal.</li><li>• The protective membrane must be intact.</li><li>• Do not kink or pinch the tubing during expression.</li><li>• All components must be completely dry.</li></ul> <b>Yellow Valve Head and Membrane Check</b> <ul style="list-style-type: none"><li>• Remove and separate valve from the membrane.</li><li>• Inspect the yellow valve head for chips or cracks. Inspect the white membrane for holes or tears. If flawed or damaged, replace the yellow valve head and/or white membrane prior to pumping.</li><li>• Wash yellow valve head and white membrane per Cleaning Instructions in Sections 4-6.</li><li>• Reassemble. Make sure the white membrane lays flat on the yellow valve head, and if it does not, replace the yellow valve head and/or white membrane prior to pumping.</li></ul> <b>BreastShield and BreastShield Connector Check</b> <ul style="list-style-type: none"><li>• Inspect breastshield and breastshield connector to make sure there are no cracks and they securely attach to each other.</li><li>• Make sure the breast shield forms a complete seal around the breast.</li></ul> <b>Other Checks</b> <p>Inspect the following to check for damage and secure connections.</p> <ul style="list-style-type: none"><li>• Secure tubing adapter to the breastshield connector.</li><li>• Test vacuum. If suction is not improved, contact Medela Customer Service at 1-800-435-8316.</li></ul> <b>Tubing Check</b> <ul style="list-style-type: none"><li>• If damaged replace prior to pumping.</li><li>• Inspect tubing for damage and secure connections.</li><li>• Check that the ends of the tubing are firmly connected to the connector and the opening in the membrane cap.</li><li>• If single pumping, make sure only one membrane cap is seated.</li></ul> <p><b>Take care not to kink or pinch tubing.</b></p>

## 13. Supplemental Information

<b>Harmony Check</b>	<ul style="list-style-type: none"><li>• Make sure the stem assembly on the pump handle is seated all the way into the pump body until it will go no farther. Make sure the white o-ring is in place in the stem handle.</li><li>• Make sure the oval base of the stem is properly seated in the oval base of the diaphragm.</li><li>• Finally, make sure the diaphragm is pushed all the way onto the circular rim on the underside of the handle.</li><li>• If pump handle does not release smoothly or sticks, check diaphragm assembly to correct. (Refer to step 6 of the Harmony Kit Assembly Instructions on Section 9.)</li></ul>
<b>If there is an overflow</b>	<ol style="list-style-type: none"><li>1. Place the pump set into the bottle holder.</li><li>2. Turn off the pump and unplug the power cord from the electrical outlet.</li><li>3. Use a damp (not wet) cloth to wipe the pump and membrane area.</li><li>4. If there is milk in the tubing: Remove tubing, protective membrane and membrane cap and clean in accordance with <b>Section 6</b>. Shake out any drops of water from the tubing and hang up the tubing to dry or let the pump run with tubing attached until dry. If there is condensation in the tubing: Let the pump run with tubing attached until dry.</li><li>5. When components are completely dry, reassemble breastpump and accessories set.</li></ol>
<b>Condensation or Milk in Tubing</b>	<ul style="list-style-type: none"><li>• Turn off the pump and unplug from power source.</li><li>• Use a damp (not wet) cloth to wipe the pump.</li><li>• Refer to cleaning instructions "Tubing Cleaning" Section 6.</li><li>• If necessary, clean the pump kit.</li><li>• When components are completely dry, reassemble breastpump and kit.</li></ul>
<b>No "Let-down" or Breastmilk Expression</b>	<ul style="list-style-type: none"><li>• Ensure your breastpump kit is assembled correctly and suction is available.</li><li>• Relax and take a 10-15 minute break, if let down is not achieved after 2 consecutive pumping sessions.</li><li>• Consult with a healthcare or lactation professional if expression does not occur.</li></ul>

If you have not resolved the problem with your breastpump or you have further questions, please contact Medela Customer Service at 1-800-435-8316 or fill out the contact us form at [www.medelabreastfeedingus.com](http://www.medelabreastfeedingus.com).

## 13. Supplemental Information (cont.)

<b>Low or No Suction</b>	<p>Yellow Valve Head and White Membrane Check</p> <ul style="list-style-type: none"><li>• Remove and separate yellow valve head from white membrane.</li><li>• Inspect the yellow valve head for chips or cracks. Inspect the white membrane for holes or tears. If flawed or damaged replace valve and/or white membrane prior to pumping.</li><li>• Wash yellow valve head and white membrane per Cleaning instructions in Section 4.</li><li>• Reassemble. Make sure the white membrane lays flat on the yellow valve head, and if it does not, replace the yellow valve head and/or white membrane prior to pumping.</li></ul> <p>Breastshield and Breastshield Connector Check</p> <ul style="list-style-type: none"><li>• Inspect breastshield and breastshield connector to make sure there are no cracks and they securely attach to each other.</li></ul> <p>Other Checks</p> <p>Inspect the following to check for damage and secure connections.</p> <ul style="list-style-type: none"><li>• Tubing adapter to breastshield connector.</li><li>• Inspect Symphony membranes. If membranes appear to be worn or have a tear they need to be replaced (Article # 67091).</li><li>• Test vacuum. If suction is not improved, contact Medela Customer Service at 1-800-435-8316.</li></ul>
<b>Condensation or milk in tubing</b>	<ul style="list-style-type: none"><li>• Refer to “Tubing cleaning” Section 6.</li></ul>
<b>No “let-down” or breastmilk expression</b>	<ul style="list-style-type: none"><li>• Ensure your breastpump kit is assembled correctly and that there is suction.</li><li>• Relax and take a 10-15 minute break if let down is not achieved after 2 consecutive pumping sessions.</li><li>• Consult with your healthcare provider or breastfeeding specialist if expression does not occur.</li></ul>

Following are some common breastfeeding related conditions. If you experience any of these symptoms, contact a healthcare professional or breastfeeding specialist.

	<b>Symptom</b>	<b>Potential Causes</b>
<b>Engorgement</b>	Breasts are hard and uncomfortable, possibly with reddened areas.	Milk not draining properly from breast. Milk can drain back into the tissue causing areas to swell and become tender.
<b>Blocked/Plugged Ducts</b>	Area of breast will look reddened and may be tender to touch.	Milk not being drained from a specific duct. The area becomes 'clogged' up and milk is then prevented from flowing.
<b>Mastitis</b>	It often follows on from engorgement but can just occur suddenly. The initial symptoms are similar to flu – fatigue, headache and muscle aches, fever and localized breast tenderness. It can be in one or even both breasts and needs immediate treatment.	A bacterial infection in the breast tissue which is often accompanied by cracked nipples.
A Healthcare Professional or Breastfeeding Specialist can give you guidance in breastfeeding your baby and using a breastpump. Their guidance is valuable in terms of the lifetime of health benefits for both you and your baby. A listing of Lactation Professionals are available at <a href="http://www.medelalocator.com">www.medelalocator.com</a> or call 1-800-TELL-YOU (1-800-835-5968).		

If assistance is still needed after reviewing this booklet, please call Medela Customer Service at (800) 435-8316 or (815) 363-1166.

Substitutions may occur depending on product availability.

## 14. Warranty



### Caution

This is a single user product. Use by more than one person may present a health risk and performance questions and voids the warranty.

This product is warranted by Medela to the original purchaser to be free from defects in material and workmanship for the period of 90 days from the date of purchase. Warranty can only be claimed in the country of purchase. In the event of a defect, Medela will repair or, at Medela's option, replace this product, without charge for such replacement, parts or labor. Purchaser shall bear all expense for returning this product to Medela. This warranty does not apply to any product used commercially or which has been subjected to misuse, abuse or alteration.

ANY AND ALL IMPLIED WARRANTIES, INCLUDING THE WARRANTY OF MERCHANTABILITY, ARE LIMITED TO A DURATION OF 90 DAYS FROM DATE OF PURCHASE. SOME STATES DO NOT ALLOW LIMITATIONS ON HOW LONG AN IMPLIED WARRANTY LASTS, SO THE ABOVE LIMITATIONS MAY NOT APPLY TO YOU. THIS WARRANTY GIVES YOU SPECIFIC LEGAL RIGHTS AND YOU MAY ALSO HAVE OTHER RIGHTS WHICH VARY FROM STATE TO STATE.

Before you make a claim under this warranty, it may save time and expense to call Medela Customer Service (toll free) at 1-800-435-8316. You may also call this number for additional information concerning this warranty. If you wish to make a claim under this warranty, you must return this product to Medela with a return authorization number received from Medela Customer Service, prepaid, together with your dated bill of sale or other proof of purchase and a brief statement of the problem to the following address:

Medela LLC – Returns, Door 4501  
1101 Corporate Dr.  
McHenry, IL 60050  
ATTENTION: RETURNS

Medela Canada Inc.  
4160 Sladeview Cres., Unit #8  
Mississauga, ON  
Canada L5L 0A1  
ATTENTION: RETURNS

Call first for authorization number. Returns not accepted without an authorization number.

